

Disc Couplings

CL5 Series



Single Disc



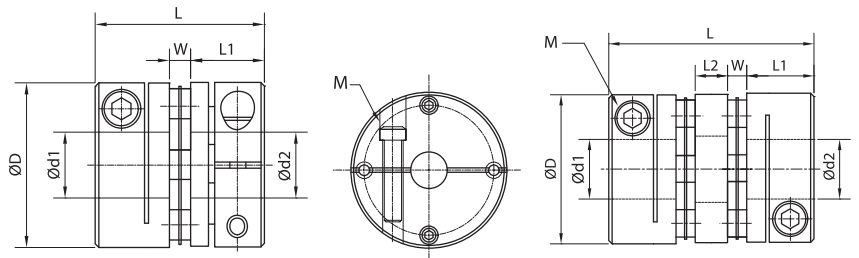
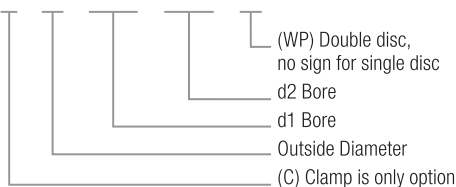
Double Disc

CL5 OPTIONS

- Aluminum Alloy
- Stainless Steel Plate Springs
- Single Disc
- Double Disc
- Clamp

ORDERING INFORMATION

CL5 - C - □ - □ - □ - □ - □



CL5 SINGLE AND DOUBLE DISC DIMENSIONS

Model	Bore Range (Ød1-Ød2)		ØD	L		W	L1	L2	M	Wrench Torque			
	Single and Double Disc			Single Disc	Double Disc						Single and Double Disc	Double Disc	Single and Double Disc
	in	mm		mm	mm						mm	mm	metric
CL5-C19	0.11-0.31	3-8	19	20	27	1.2	9.4	5.8	M2.5	1			
CL5-C26	0.19-0.39	5-10	26	25.5	35	2.5	11.5	7	M3	1.5			
CL5-C34	0.31-0.55	8-14	34	31.3	45	3.1	14.1	10.6	M4	1.5			
CL5-C39	0.39-0.62	10-16	39	34.1	49	4.1	15	10.8	M4	2.5			
CL5-C44	0.43-0.75	11-19	44	34.5	50	4.5	15	11	M4	2.5			
CL5-C56	0.55-0.94	14-24	56	45	63	5	20	13	M5	7			
CL5-C68	0.74-1.37	19-35	68	54	74	6	24	14	M6	12			
CL5-C82	0.94-1.57	24-40	82	68	98	8	30	22	M8	16			
CL5-C94	0.98-1.57	25-40	94	68	98	8	30	22	M8	28			
CL5-C104	1.18-1.77	30-45	104	70	102	10	30	22	M8	28			

CL5 SINGLE AND DOUBLE DISC SPECIFICATIONS

Model	Rated Torque		Max. Torque		Max. Speed	Moment of Inertia (kg·m ²)		Static Torsional Stiffness (Nm/rad)		Errors of Eccentricity (mm)	Errors of Shaft Angularity (°C)		Errors of Shaft Endplay (mm)		Mass (g)	
	lb-in	Nm	lb-in	Nm		rpm	Single Disc	Double Disc	Single Disc		Double Disc	Double Disc	Single Disc	Double Disc	Single Disc	Double Disc
CL5-C19	8.85	1.0	17.70	2.0	10000	0.65x10 ⁻⁶	0.9x10 ⁻⁶	200	170	0.04	1	1.5	± 0.2	± 0.4	12	16
CL5-C26	12.39	1.4	24.78	2.8	10000	1.8x10 ⁻⁶	3.3x10 ⁻⁶	690	950	0.04	1	1.5	± 0.2	± 0.4	24	34
CL5-C34	24.78	2.8	49.56	5.6	10000	7.2x10 ⁻⁶	8.9x10 ⁻⁶	1650	1960	0.04	1	1.5	± 0.2	± 0.4	46	70
CL5-C39	51.33	5.8	102.66	11.6	10000	1.8x10 ⁻⁵	2.4x10 ⁻⁵	2500	4500	0.04	1	1.5	± 0.2	± 0.4	78	118
CL5-C44	76.99	8.7	153.99	17.4	10000	2.5x10 ⁻⁵	3.2x10 ⁻⁵	2900	5100	0.04	1	1.5	± 0.2	± 0.4	96	142
CL5-C56	221.25	25.0	442.50	50.0	10000	1.0x10 ⁻⁴	1.1x10 ⁻⁴	8400	10500	0.04	1	1.5	± 0.2	± 0.4	206	296
CL5-C68	486.75	55.0	973.50	110.0	10000	1.9x10 ⁻⁴	2.8x10 ⁻⁴	11500	18500	0.04	1	1.5	± 0.2	± 0.4	366	544
CL5-C82	708.00	80.0	1416.00	160.0	10000	7.0x10 ⁻⁴	1.0x10 ⁻³	14550	21800	0.04	1	1.5	± 0.2	± 0.4	710	1020
CL5-C94	1637.25	185.0	3274.50	370.0	10000	1.23x10 ⁻³	1.76x10 ⁻³	16900	84500	0.04	1	1.5	± 0.2	± 0.4	960	1210
CL5-C104	2256.75	255.0	4513.50	510.0	10000	1.86x10 ⁻³	1.86x10 ⁻³	25100	125500	0.04	1	1.5	± 0.2	± 0.4	1190	1460