



Aluminum



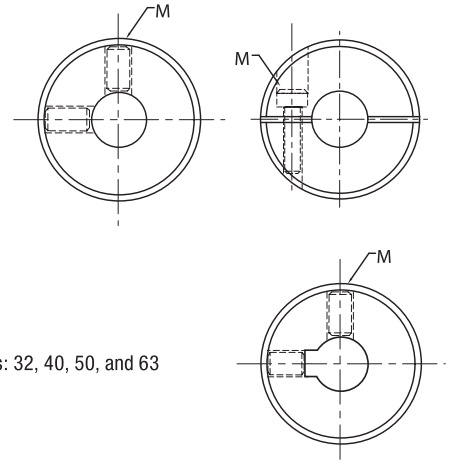
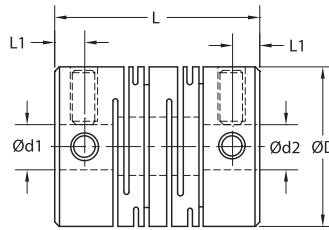
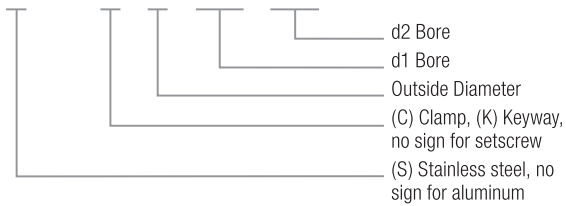
Stainless Steel

### CL7 OPTIONS

- Aluminum Alloy
- Stainless Steel
- Parallel
- Setscrew
- Clamp
- Keyway & Setscrew

### ORDERING INFORMATION

□ CL7 - □ - □ - □ - □ - □



\*Keyway available in the following sizes: 32, 40, 50, and 63

## Beam Couplings

## CL7 Series

### CL7 SETSCREW KEYWAY AND CLAMP DIMENSIONS

Model	Bore Range (Ød1-Ød2)				ØD	L	L1		M		Wrench Torque	
	Setscrew and Clamp		Keyway				Setscrew, Clamp and Keyway		Setscrew Keyway	Clamp	Setscrew Keyway	Clamp
	in	mm	in	mm	mm	mm	mm	mm	metric	metric	Nm	Nm
CL7-12 SCL7-12	0.11-0.19	3-5	N/A	N/A	12	18.5	2.5	2.5	M2.5	M2	0.5	0.5
CL7-16 SCL7-16	0.15-0.25	4-6.35	N/A	N/A	16	23	3	3.25	M3	M2.5	0.7	1
CL7-20 SCL7-20	0.19-0.37	5-9.52	N/A	N/A	20	26	3	3.75	M3	M2.5	0.7	1
CL7-25 SCL7-25	0.31-0.47	8-12	N/A	N/A	25	31	4	4.25	M4	M3	1.7	1.5
CL7-32 SCL7-32	0.39-0.55	10-14	0.39-0.55	10-14	32	41	6	6	M4	M4	1.7	2.5
CL7-40 SCL7-40	0.39-0.70	10-18	0.47-0.70	12-18	40	56	8.5	8.5	M5	M5	4	4
CL7-50 SCL7-50	0.47-0.94	12-19	0.55-0.78	14-20	50	71	10.5	10.5	M6	M6	7	8
CL7-63 SCL7-63	0.55-0.94	14-24	0.70-1.18	18-30	63	90	13	13	M8	M8	15	16

### CL7 SETSCREW KEYWAY AND CLAMP SPECIFICATIONS

Model	Rated Torque		Max. Torque		Max. Speed (rpm)		Moment of Inertia (kg•m <sup>2</sup> )		Static Torsional Stiffness (Nm/rad)		Errors of Eccentricity (mm)	Errors of Shaft Angularity (°C)	Errors of Shaft Endplay	Mass (g)	
	lb-in	Nm	lb-in	Nm	Setscrew	Clamp Keyway*	Setscrew Keyway*	Clamp	Setscrew Keyway*	Clamp	Setscrew Keyway and Clamp		Setscrew Keyway*	Clamp	
CL7-12	4.42	0.5	8.85	1.0	30000	10000	8.2x10 <sup>-8</sup>	7.6x10 <sup>-8</sup>	33	34	0.1	1.5	± 0.3	4	4
CL7-16	7.08	0.8	14.16	1.6	22000	9300	3.2x10 <sup>-7</sup>	3.2x10 <sup>-7</sup>	46	46	0.1	1.5	± 0.3	8	8
CL7-20	9.73	1.1	19.47	2.2	18000	7500	8.8x10 <sup>-6</sup>	8.8x10 <sup>-6</sup>	115	118	0.1	1.5	± 0.3	16	18
CL7-25	12.30	1.4	24.78	2.8	14000	6000	2.5x10 <sup>-6</sup>	2.5x10 <sup>-6</sup>	165	167	0.15	1.5	± 0.35	28	32
CL7-32	24.78	2.8	49.56	5.6	10000	4600	9.5x10 <sup>-6</sup>	9.6x10 <sup>-6</sup>	270	228	0.15	1.5	± 0.35	62	66
CL7-40	55.75	6.3	111.51	12.6	9400	3600	3.1x10 <sup>-5</sup>	3.2x10 <sup>-5</sup>	345	346	0.2	1.5	± 0.35	134	138
CL7-50	97.35	11.0	194.70	22.0	7600	3000	1.0x10 <sup>-5</sup>	9x10 <sup>-5</sup>	580	580	0.2	1.5	± 0.35	266	272
CL7-63	194.70	22.0	389.40	44.0	6000	2200	3.0x10 <sup>-4</sup>	3.1x10 <sup>-4</sup>	830	843	0.2	1.5	± 0.35	500	530
SCL7-12	7.08	0.8	14.16	1.6	30000	10000	2.0x10 <sup>-7</sup>	2.1x10 <sup>-7</sup>	60	62	0.1	1.5	± 0.3	12	14
SCL7-16	9.73	1.1	19.47	2.2	22000	9300	8.3x10 <sup>-7</sup>	8.9x10 <sup>-7</sup>	80	83	0.1	1.5	± 0.3	22	26
SCL7-20	14.16	1.6	28.32	3.2	18000	7500	2.2x10 <sup>-6</sup>	2.4x10 <sup>-6</sup>	235	246	0.1	1.5	± 0.3	40	48
SCL7-25	19.47	2.2	38.94	4.4	14000	6000	6.7x10 <sup>-6</sup>	7.0x10 <sup>-6</sup>	315	315	0.15	1.5	± 0.35	74	78
SCL7-32	48.67	5.5	97.35	11.0	10000	4600	2.5x10 <sup>-5</sup>	2.6x10 <sup>-5</sup>	837	845	0.15	1.5	± 0.35	162	174
SCL7-40	76.99	8.7	153.99	17.4	9400	3600	8.6x10 <sup>-5</sup>	8.9x10 <sup>-5</sup>	980	990	0.2	1.5	± 0.35	354	372
SCL7-50	141.60	16.0	283.20	32.0	7600	3000	2.6x10 <sup>-4</sup>	2.7x10 <sup>-4</sup>	1385	1380	0.2	1.5	± 0.35	710	760
SCL7-63	336.30	38.0	672.60	76.0	6000	2200	8.2x10 <sup>-4</sup>	8.7x10 <sup>-4</sup>	1795	1790	0.2	1.5	± 0.35	1310	1410

\*Keyway available in the following sizes: 32, 40, 50, and 63