

## Encoder Couplings

## CL12 Series

- Zero backlash, flexible shaft
- Low inertia
- Large misalignments compensation
- Electrical isolation

### CL12 OPTIONS

Hubs : Aluminum alloy with anodizing  
 304 Stainless steel  
 Elastomer: Special PU  
 Setscrew

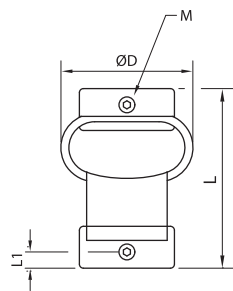
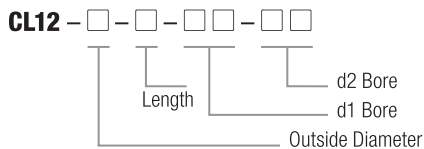


CL12-25-30  
 CL12-30-36  
 CL12-46-55

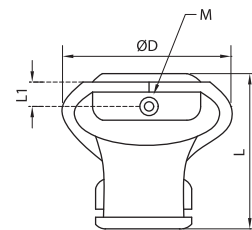


CL12-25-23  
 CL12-30-26  
 CL12-46-43

### ORDERING INFORMATION



CL12-25-30  
 CL12-30-36  
 CL12-46-55



CL12-25-23  
 CL12-30-26  
 CL12-46-43

### CL12 COUPLING DIMENSIONS

Model	Bore Range (Ød1-Ød2)		ØD	L		L1	M	Wrench Torque
	in	mm		mm	mm			
CL12-25	0.157-0.315	4-8	25	23, 30	2.5	M3	1	
CL12-30	0.157-0.394	4-10	30	26, 36	3.1	M4	1.5	
CL12-46	0.236-0.591	6-15	46	43, 55	4	M4	1.5	
CL12-54	0.315-0.669	8-17	54	60	6	M5	2	

### CL12 COUPLING SPECIFICATIONS

Model	Rated Torque		Max. Torque		Max. Speed	Max. Misalignment			Mass
	lb-in	Nm	lb-in	Nm		Angular	Radial	Axial	
					°C	mm	mm	g	
CL12-25	7.08	0.8	14.16	1.6	8000	7	2	4	12
CL12-30	7.97	0.9	15.93	1.8	6000	8	2	4.5	16
CL12-46	11.50	1.3	23.01	2.6	4000	10	2.5	5	45
CL12-54	22.12	2.5	44.25	5.0	3500	10	3	6.5	85