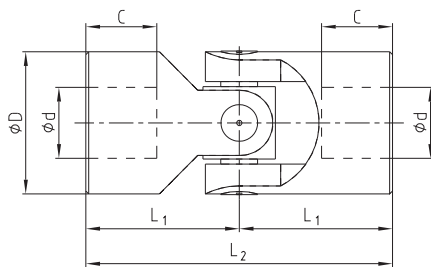


Type G and GD according to DIN 808 with plain bearing

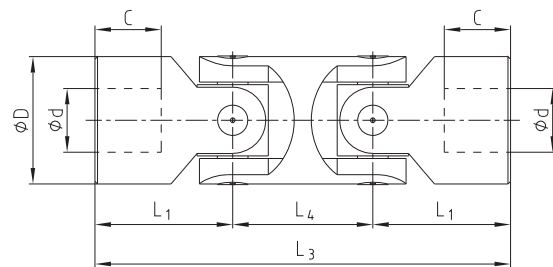


- Suitable for every application in the range of general engineering up to a maximum speed of 1000 rpm
- Type G precision single joint
- Type GD precision double joint
- Maximum articulation angle 45° for each joint
- Bearings designed as plain bearings
- Available with finish bore H7 – on request with keyway, hexagon bore or square bore
- Also available as clamping hub

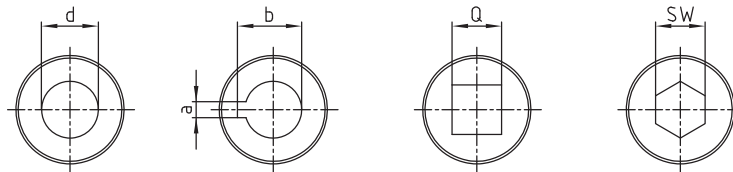
Precision single joint G



Precision double joint GD



Finish bores:



| Type G and GD | | | | | | | | | | | | | | | | |
|----------------|-------------------|---------|--------------------|-----------------|----|----------------|----------------|----|----------------|----------------|---------|------|--------|---------|--------|---------|
| Types and size | | | | Dimensions [mm] | | | | | | | | | | | Weight | |
| Size G | DIN description G | Size GD | DIN description GD | d [H7] | D | L ₂ | L ₁ | C | L ₄ | L ₃ | a [JS9] | b | Q [H8] | SW [H8] | G [kg] | GD [kg] |
| 01 G | E6 x 16-G | 01 GD | D6 x 16-G | 6 | 16 | 34 | 17 | 8 | 22 | 56 | 2 | 7,0 | 6 | 6 | 0,05 | 0,08 |
| 02 G | E8 x 16-G | 02 GD | D8 x 16-G | 8 | 16 | 40 | 20 | 11 | 22 | 62 | 2 | 9,0 | 8 | 8 | 0,05 | 0,08 |
| 03 G | E10 x 20-G | 03 GD | D10 x 20-G | 10 | 20 | 45 | 22,5 | 11 | 26 | 74 | 3 | 11,4 | 10 | 10 | 0,10 | 0,16 |
| 04 G | E12 x 25-G | 04 GD | D12 x 25-G | 12 | 25 | 56 | 28 | 13 | 30 | 86 | 4 | 13,8 | 12 | 12 | 0,16 | 0,25 |
| 05 G | E14 x 28-G | 05 GD | D14 x 28-G | 14 | 28 | 60 | 30 | 14 | 36 | 96 | 5 | 16,3 | 14 | 14 | 0,20 | 0,40 |
| 1 G | E16 x 32-G | 1 GD | D16 x 32-G | 16 | 32 | 68 | 34 | 16 | 40 | 108 | 5 | 18,3 | 16 | 16 | 0,30 | 0,50 |
| 2 G | E18 x 36-G | 2 GD | D18 x 36-G | 18 | 36 | 74 | 37 | 17 | 46 | 120 | 6 | 20,8 | 18 | 18 | 0,45 | 0,75 |
| 3 G | E20 x 42-G | 3 GD | D20 x 42-G | 20 | 42 | 82 | 41 | 18 | 50 | 132 | 6 | 22,8 | 20 | 20 | 0,60 | 1,05 |
| 4 G | E22 x 45-G | 4 GD | D22 x 45-G | 22 | 45 | 95 | 47,5 | 22 | 55 | 150 | 6 | 24,8 | 22 | 22 | 0,95 | 1,65 |
| 5 G | E25 x 50-G | 5 GD | D25 x 50-G | 25 | 50 | 108 | 54 | 26 | 62 | 170 | 8 | 28,3 | 25 | 25 | 1,20 | 2,15 |
| 6 G | E30 x 58-G | 6 GD | D30 x 58-G | 30 | 58 | 122 | 61 | 29 | 78 | 200 | 8 | 33,3 | 30 | 30 | 1,85 | 3,20 |
| 6 G1 | E32 x 58-G | 6 GD1 | D32 x 58-G | 32 | 58 | 130 | 65 | 33 | 78 | 208 | 10 | 35,3 | 30 | 30 | 2,00 | 3,40 |
| 7 G | E35 x 70-G | 7 GD | D35 x 70-G | 35 | 70 | 140 | 70 | 35 | 82 | 222 | 10 | 38,3 | - | - | 3,15 | 5,20 |
| 8 G | E40 x 80-G | 8 GD | D40 x 80-G | 40 | 80 | 160 | 80 | 40 | 95 | 255 | 12 | 43,3 | - | - | 4,60 | 8,00 |
| 9 G | E50 x 95-G | 9 GD | D50 x 95-G | 50 | 95 | 190 | 95 | 50 | 115 | 305 | 14 | 53,8 | - | - | 7,60 | 13,0 |

| | | | |
|-------------|--------------------|------------------|--|
| Order form: | 04 G | Ø12 | Ø12 keyway DIN |
| | Size/type of joint | Finish bore (H7) | Finish bore (H7) keyway to DIN 6885 sheet 1 (JS9) |