

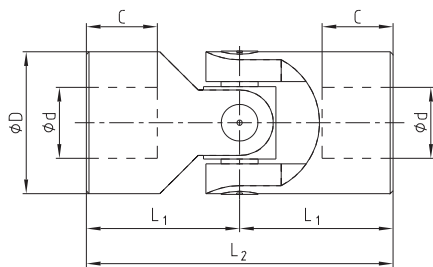
Chengdu Talent Industrial Co., Ltd.

Type H and HD according to DIN 808 with needle bearing

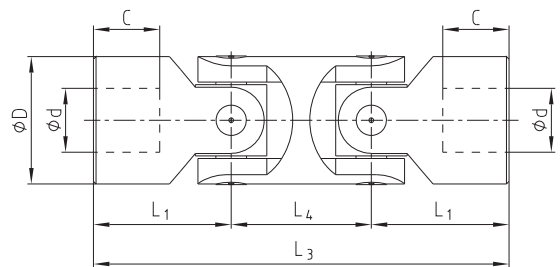


- Suitable for every application in the range of general engineering up to a maximum speed of 4000 rpm
- Type H precision single joint
- Type HD precision double joint
- Maximum articulation angle 45°
- High dynamic load - small bearing clearance
- Maintenance-free due to needle bearing
- Available with finish bore H7 – on request with keyway, hexagon bore or square bore
- Also available as clamping hub

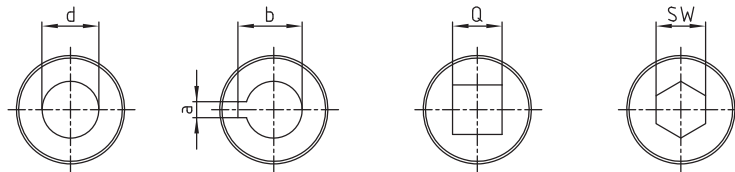
Precision single joint H



Precision double joint HD



Finish bores:



Type H and HD																
Types and size				Dimensions [mm]										Weight		
Size H	DIN description H	Size HD	DIN description HD	d [H7]	D	L ₂	L ₁	C	L ₄	L ₃	a [JS9]	b	Q [H8]	SW [H8]	H [kg]	HD [kg]
03 H	E10 x 20-H	03 HD	D10 x 20-H	10	20	45	22,5	11	26	74	3	11,4	10	10	0,10	0,16
04 H	E12 x 25-H	04 HD	D12 x 25-H	12	25	56	28	13	30	86	4	13,8	12	12	0,16	0,25
05 H	E14 x 28-H	05 HD	D14 x 28-H	14	28	60	30	14	36	96	5	16,3	14	14	0,20	0,40
1 H	E16 x 32-H	1 HD	D16 x 32-H	16	32	68	34	16	38	108	5	18,3	16	16	0,30	0,50
2 H	E18 x 36-H	2 HD	D18 x 36-H	18	36	74	37	17	46	120	6	20,8	18	18	0,45	0,75
3 H	E20 x 42-H	3 HD	D20 x 42-H	20	42	82	41	18	50	132	6	22,8	20	20	0,60	1,05
4 H	E22 x 45-H	4 HD	D22 x 45-H	22	45	95	47,5	22	55	150	6	24,8	22	22	0,95	1,65
5 H	E25 x 50-H	5 HD	D25 x 50-H	25	50	108	54	26	62	170	8	28,3	25	25	1,20	2,15
6 H	E30 x 58-H	6 HD	D30 x 58-H	30	58	122	61	29	78	200	8	33,3	30	30	1,85	3,20
6 H1	E32 x 58-H	6 HD1	D32 x 58-H	32	58	130	65	33	78	208	10	35,3	30	30	2,00	3,40
7 H	E35 x 70-H	7 HD	D35 x 70-H	35	70	140	70	35	82	222	10	38,3	-	-	3,15	5,20
8 H	E40 x 80-H	8 HD	D40 x 80-H	40	80	160	80	40	95	255	12	43,3	-	-	4,60	8,00
9 H	E50 x 95-H	9 HD	D50 x 95-H	50	95	190	95	50	115	305	14	53,8	-	-	7,60	13,0

Order form:	1 H	Ø16	Ø16 keyway DIN
	Size/type of joint	Finish bore (H7)	Finish bore (H7) keyway to DIN 6885 sheet 1 (JS9)