

TT-KC36

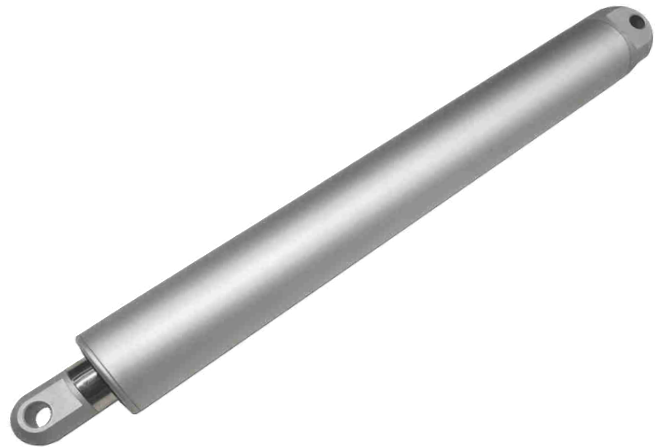
1.0 Feature

1. 12/24VDC
2. Ø36mm Dia
3. Max load 2000N
4. Max stroke: 600mm
5. Stainless Steel shaft
6. Built-in Limit switch
7. Operation Temperature: -25°C to + 65°C
8. Noise: ≤56db
9. IP66

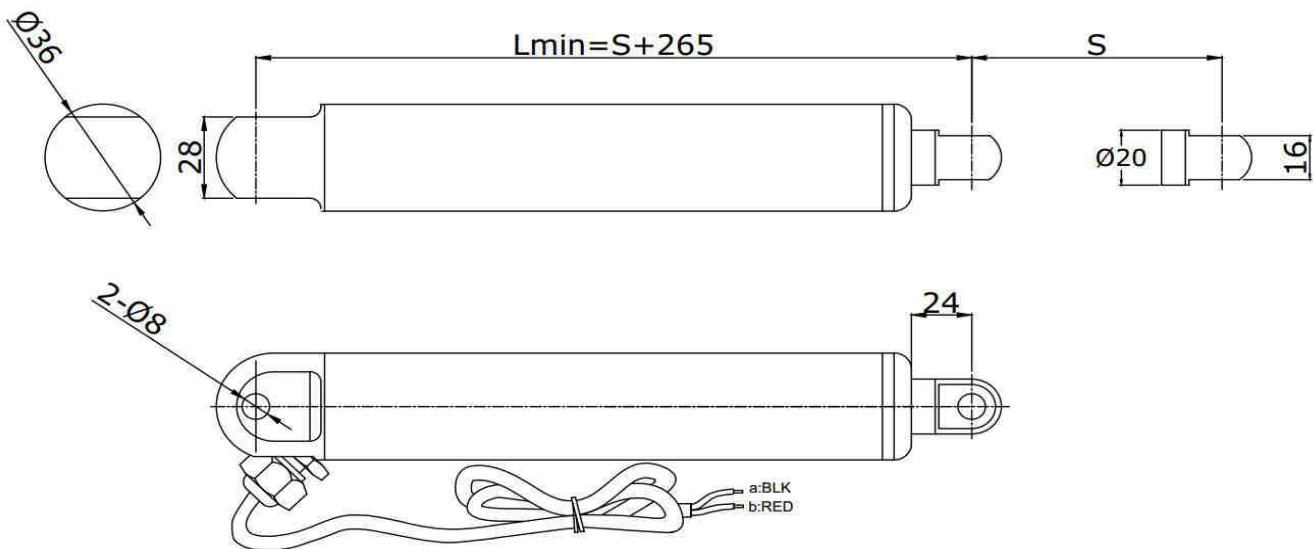
Option

Colour: Silver or Black

Feedback: Hall sensor



2.0 Dimension



Stroke (S)	50-300	301-400	401-600
Length(L)	S+265	S+295	S+325

3.0 Specification

Code	Rated Load (N)	Speed (mm/s) ±10%		Current (A)			
				12V		24V	
		No load	Full load	No load	Full load	No load	Full load
A	2000	9.0	6.5	1.00	4.0	0.60	3.0
B	1000	7.5	5.5	0.60	2.5	0.40	1.5
C	1000	15.0	12.0	0.60	2.5	0.40	1.5