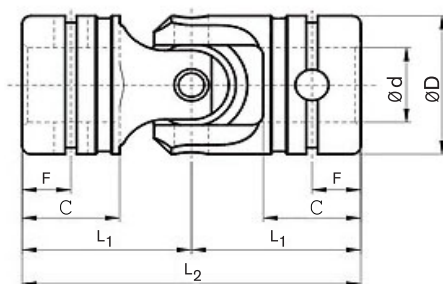


Type WS according to DIN 808 with plain bearing

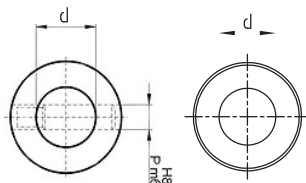


- Suitable for every application in the range of general engineering up to a maximum speed of 2000 rpm
- Type WS precision single joint
- For small shaft diameter use
- Maximum articulation angle 35° for each joint
- Bearings designed as plain bearings
- Available with finish bore H7 – on request with Pin, or set screw fixing

Precision single joint WS:



Finish bores:



Type WS																
Types and size																Weight
Size WS	DIN description WS	Size WSD	DIN description WSD	d [H7]	D	L <sub>2</sub>	L <sub>1</sub>	C	Rated Torque [N.m]	F	P [H8]	a [JS9]	b	Q [H8]	SW [H8]	W [kg]
01WS	E3 x 6-WS	-	-	3	6	26	13	9	0.13	2.5	1	-	-	-	-	0,006
02WS	E4 x 8-WS	-	-	4	8	24	12	7	0.96	4	1.5	-	-	-	-	0,008
03WS	E5 x 10-WS	-	-	5	10	30	15	9	3.23	5	2	-	-	-	-	0,012

Order form:	03 WS	Ø5	Ø2 Pin Hole
	Size/type of joint	Finish bore (H7)	Finish bore (H8)